

Product Information

Bone Cement Screw

Bone cement can be injected to strengthen the pull-out resistance of the pedicle screw during universal surgery.

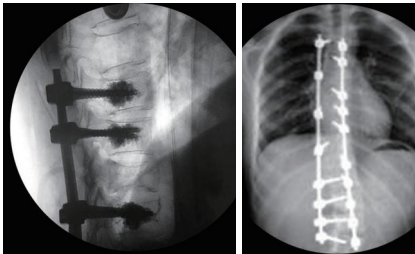


Two Nut Options

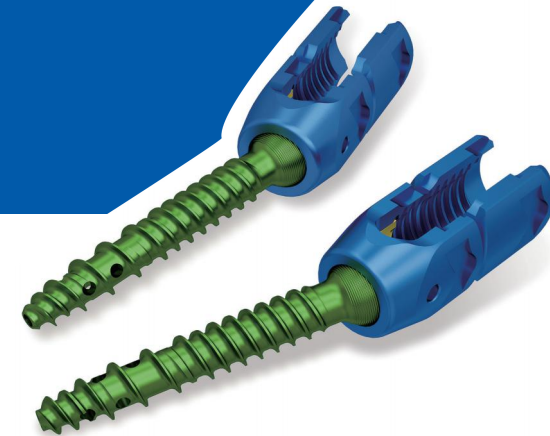
Provide One-step Locking Nut and Two-step Locking Nut, which can help to support the front column of the spine and effectively restore the physiological curvature.



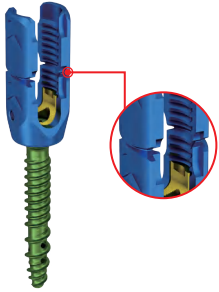
Post-operation Image



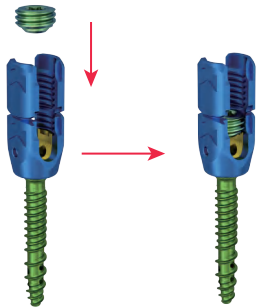
TINA Spine System 5.5/6.0



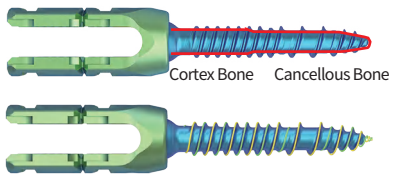
Extended tabs with notches on both sides, facilitate the tab removal and provide smooth break-off surface.



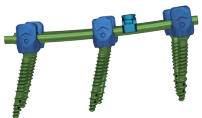
Saddle locking block with serrated thread increase contact area, enhance the holding force between rod and screw, and minimize the cross threading.



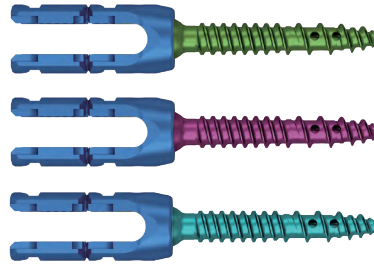
Double-lead thread design provide secure anchorage in the bone and fast screw insertion.



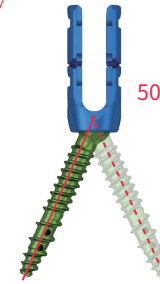
Transconnector with ultra-low profile can minimize irritation to surrounding soft tissue.



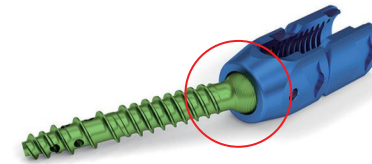
Provide TINA Spine System 5.5/6.0 with the same instrument set for clinical option.
Different screw sizes with different colors for easy identifying during operation.



The maximal angle of polyaxial pedicle is 50°, facilitating the placement of pedicle screw and rod.

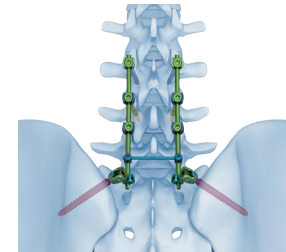


Spherical head of the screw body provide better angular stability and friction force.



Iliac Screws

Provide Iliac Screws with large diameter for sacroiliac reduction and internal fixation.



Indications

- Thoracolumbar and Sacral Spine
- Deformities
 - Degenerative disc disease
 - Spondylolisthesis
 - Trauma
 - Tumor
 - Stenosis

Contraindications

- Fractures and tumors with loss of anterior support
- Severe osteoporosis

